

# KYRIALE

## I

### TEMPORE PASCHALI – OSTERZEIT

(Lux et origo lucis)

SG 484

VIII  
**K**

Y-ri-e léi-son. Chri-ste  
léi-son. Ký-ri-e léi-son.  
Ký-ri-e léi-son.

## A

### PER DOMINICIS – FÜR SONNTAGE

(Te, Christe Rex, supplices exoramus)

(Kyrie o Theos critis dicheos)

SG 484

VIII  
**K**

Y-ri-e-léi-son. Ký-ri-

e léi- son. Ký- ri- e léi-

son. Chri- ste léi-son. Chri-

ste léi- son. Chri- ste léi-

son. Ký- ri- e léi- son. Ký- ri- e léi-

son. Ký- ri- e léi-

son.

SG 376

IV

**G** Ló-ri- a in excél- sis De- o. Et in ter- ra pax

ho-mí-ni-bus bonae vo-luntá- tis. Laudámus te. Be-ne-dí- ci-

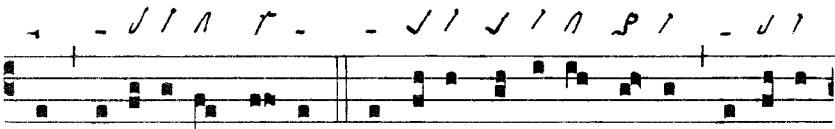
mus te. Ado-rámus te. Glo-ri- fi-cá-mus te. Grá-ti- as

á-gimus ti- bi propter magnam gló- ri- am tu- am. Dó-mi-ne

De- us, Rex cae-lé- stis, De- us Pa- ter omní- pot- ens. Dó-mi-ne

Fi- li u-ni- gé- ni- te Ie- su Chri- ste. Dó- mi- ne De- us,

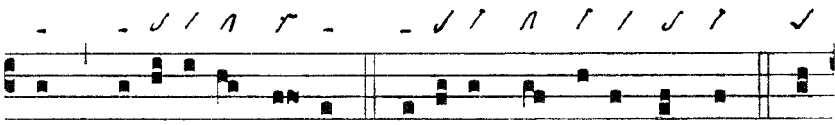
Agnus De- i, Fí- li- us Pa- tris. Qui tol- lis peccá- ta mun-



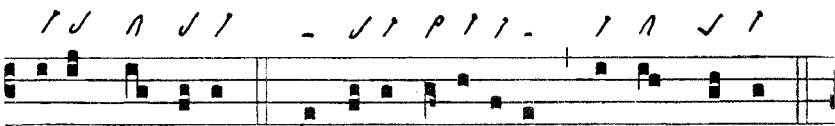
di, mi-se-ré-re no-bis. Qui tol-lis peccá-ta mundi, súsci-pe



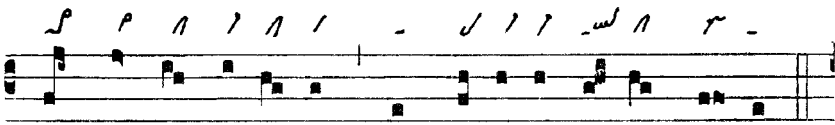
de-pre-ca-ti- ó-nem nostram. Qui se-des ad déx-te-ram Pa-



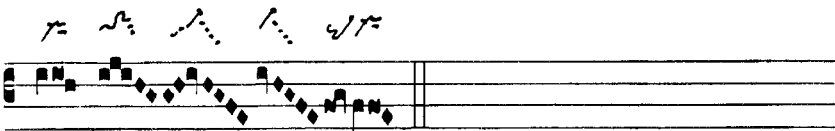
tris, mi-se-ré-re no-bis. Quóni-am tu so-lus sanctus Tu



so-lus Dó-mi-nus. Tu so-lus Altí-s-si-mus, Ie-su Chri-ste.



Cum Sancto Spí-ri-tu, in gló-ri-a De-i Pa-tris.

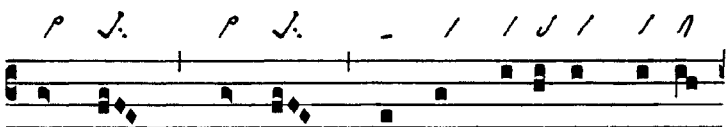


A-men.

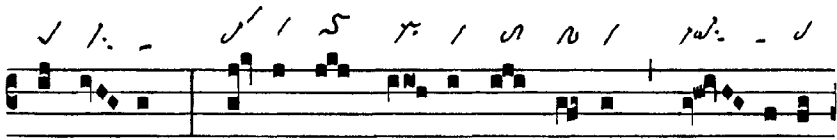
SG 484

IV

**S**



Anctus, Sanctus, Sanctus Dómi-nus De-us



Sá-ba- oth. Ple-ni sunt cae- li et ter-ra gló- ri- a



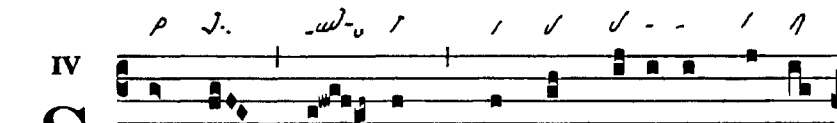
tu- a. Ho-sánna in excél-sis. Be-ne-díctus qui ve- nit



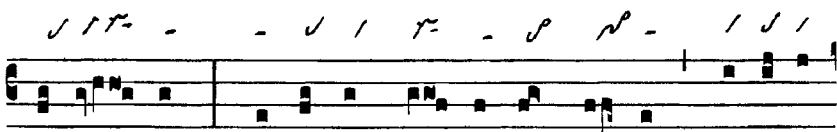
in nó- mi-ne Dó-mi-ni. Ho- sán- na in excél- sis.

oder:

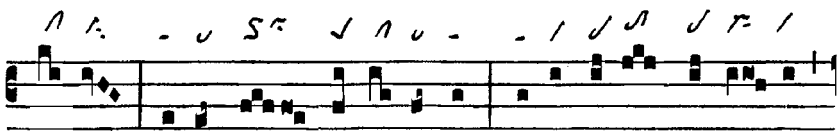
SG 484



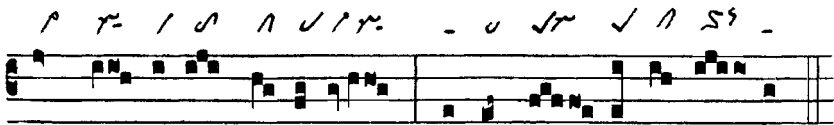
**S** Anctus, San- ctus, Sanctus Dómi-nus De- us



Sá-ba- oth. Ple-ni sunt cae- li et ter- ra gló- ri- a

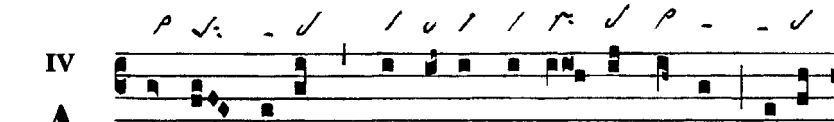


tu- a. Ho-sánna in excél-sis. Be-ne-díctus qui ve- nit

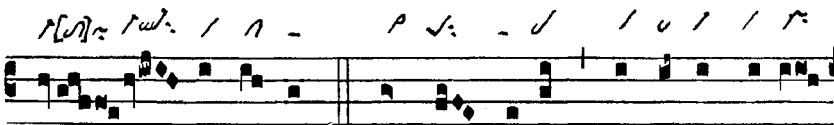


in nó- mi-ne Dó-mi-ni. Ho-sánna in excél- sis.

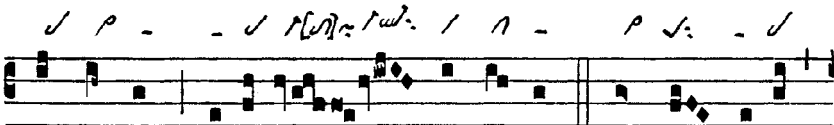
Ba 6



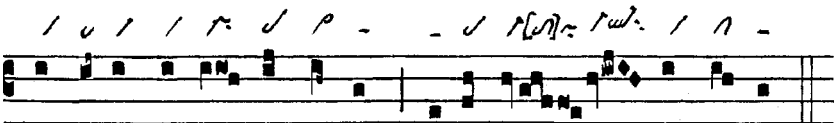
**A**-gnus De- i, qui tol-lis peccá- ta mundi : mi-se-



ré- re no- bis. Agnus De- i, qui tol-lis peccá-



ta mundi : mi-se-ré- re no- bis. Agnus De- i,



qui tol-lis peccá- ta mundi : dona no- bis pa- cem.

**Quellen****Kyrie. *Lux et origo lucis***

SG 484 (211), SG 381 (296), SG 376 (72), SG 378 (115), SG 380 (108);  
Bs 664 (160<sup>v</sup>), Ald 2 (127), SG 546 (4).

**Kyrie. *O Theos critis dicheos***

SG 484 (249), SG 381 (313), SG 376 (73), SG 378 (121), B 5 (29<sup>v</sup>),  
Mü 14322 (100); Bs 664 (160<sup>v</sup>), Ald 2 (124), SG 546 (7<sup>v</sup>).

**Gloria**

SG 376 (68), SG 340 (198), SG 361 (141), SG 378; Ott 3 (46<sup>v</sup>),  
Bs 664 (161), Ald 2 (127), Drf (289b), SG 546 (85).

**Sanctus**

SG 484 (240), SG 381 (310), SG 376 (75), Mü 14083 (108), B 5 (31<sup>v</sup>);  
Mo 7 (14), Pn nal 1871 (52<sup>v</sup>), Bv 34 (285), Nur (160<sup>v</sup>), Drf (290<sup>va</sup>).

**aliter**

SG 484 (41), SG 381 (310); Mü 9921.

**Agnus Dei**

Ba 6 (94<sup>v</sup>), Ba 5 (39<sup>v</sup>), Mü 14322 (119<sup>v</sup>), Mü 14083 (110<sup>v</sup>); Pn 13252 (69<sup>v</sup>),  
Pn 7185 (111<sup>v</sup>), Pn 10508 (129).